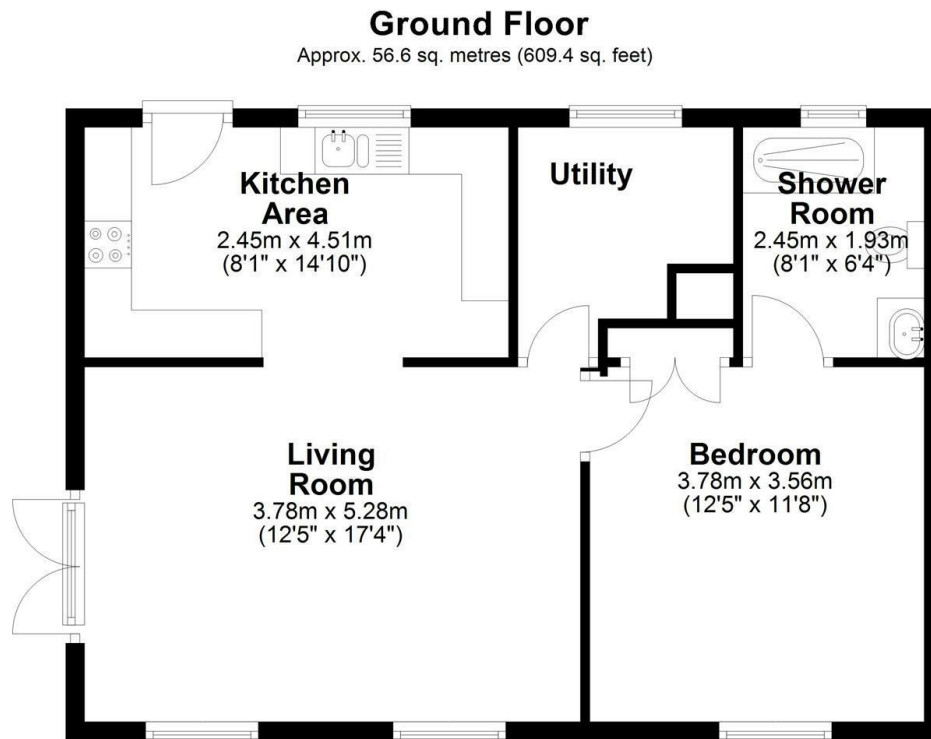




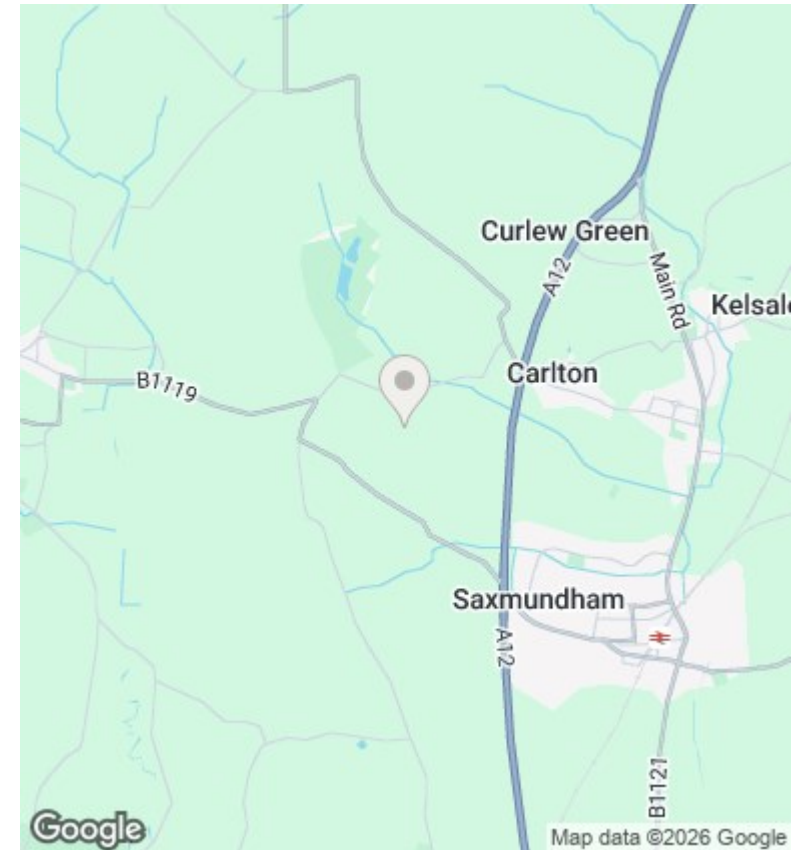
## Ashgrove Farm, Kelsale Cum Carlton

£1,200 PCM

- Barn conversion
- Semi open plan living/kitchen space
- EPC: B
- Peaceful setting
- Garden
- Holding deposit: £276.92
- Stunning original features
- Fully furnished
- Sorry no smokers



Total area: approx. 56.6 sq. metres (609.4 sq. feet)



### Conveyancing, Surveys & Financial Services

Flick & Son may refer clients to My Mortgage Planner for financial services, Fairweather Law, Stamford Legal and Juno Property Lawyers Ltd for conveyancing and MS Surveys for property surveys. It is the clients decision whether to use these services however if the decision is made to proceed with these services, it should be known that Flick & Son will receive a referral fee of £299 for Jigsaw Mortgages Ltd, £200 fee for Fairweather Law referrals, £150 fee for Stamford Legal referrals, £250 fee for Juno Property Lawyers Ltd referrals and £50 referral fee for MS Surveys.

### Floorplans

These plans are for illustrative purposes only and should not be used for any other purpose by any prospective purchaser or any other party.

Energy Efficiency Rating		Current	Potential
Very energy efficient - lower running costs			
(92 plus) <b>A</b>			
(81-91) <b>B</b>		84	87
(69-80) <b>C</b>			
(55-68) <b>D</b>			
(39-54) <b>E</b>			
(21-38) <b>F</b>			
(1-20) <b>G</b>			
Not energy efficient - higher running costs			
<b>England &amp; Wales</b>		EU Directive 2002/91/EC	

### Energy Efficiency Rating

The full energy performance certificate can be viewed online at the national EPC register at [www.epcregister.com](http://www.epcregister.com)